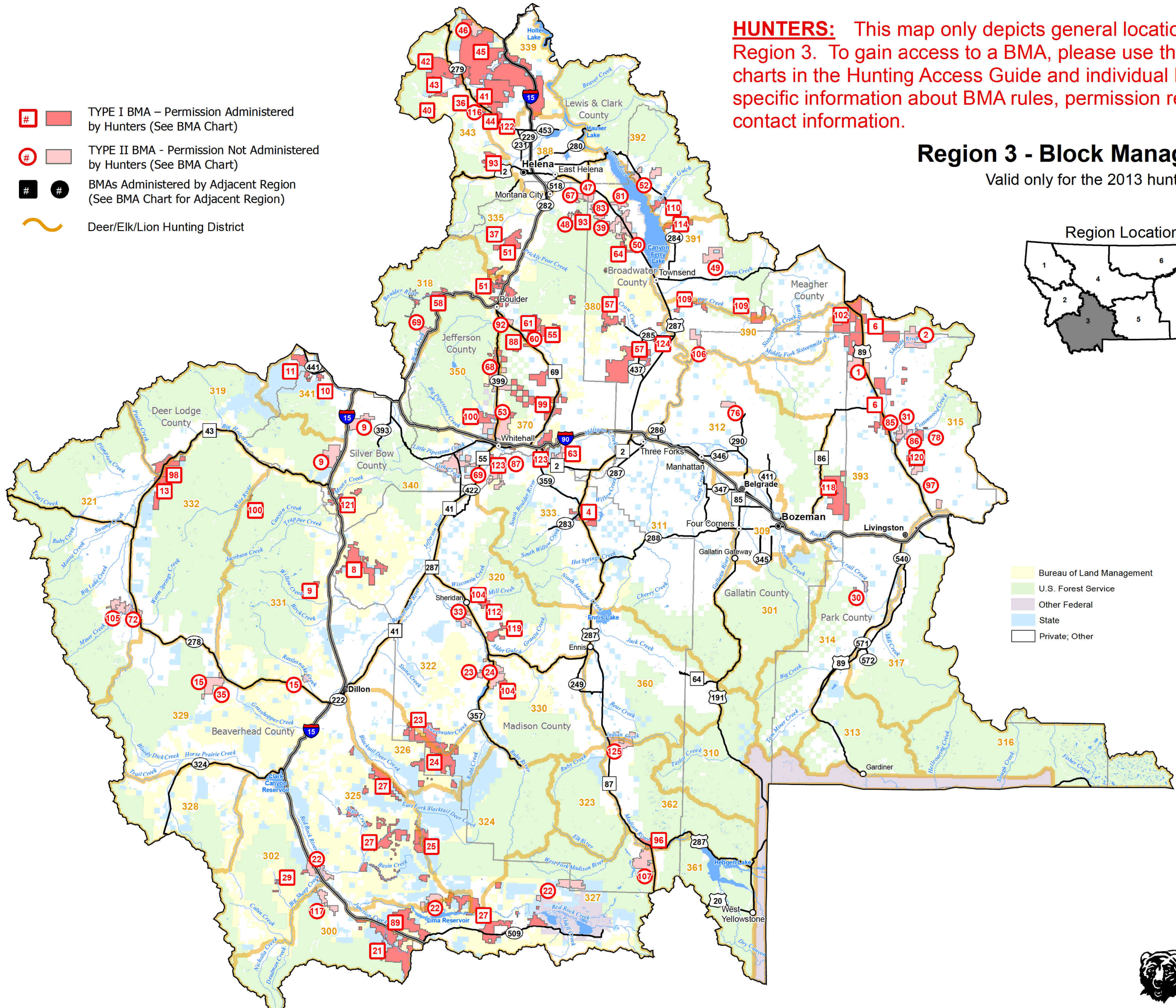
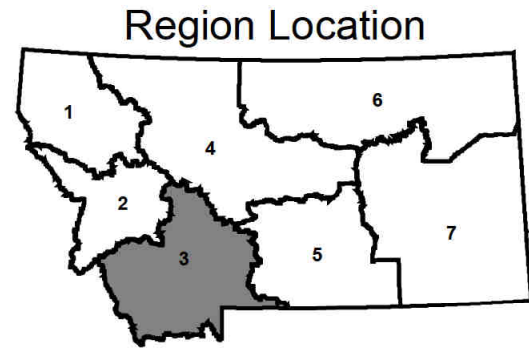


HUNTERS: This map only depicts general locations of BMAs for Region 3. To gain access to a BMA, please use the Regional charts in the Hunting Access Guide and individual BMA map for specific information about BMA rules, permission requirements, and contact information.

Region 3 - Block Management Areas

Valid only for the 2013 hunting season.

- # TYPE I BMA – Permission Administered by Hunters (See BMA Chart)
- # TYPE II BMA - Permission Not Administered by Hunters (See BMA Chart)
- # # BMAs Administered by Adjacent Region (See BMA Chart for Adjacent Region)
- Deer/Elk/Lion Hunting District



- Bureau of Land Management
- U.S. Forest Service
- Other Federal
- State
- Private; Other



0 5 10
Miles

1 : 825,000
1 inch = 13 miles

