



Montana - Wyoming West

R A N C H B R O K E R A G E

Harris Ranch



*Clifton M. Berglee, D.V.M.
(Listing Broker)
406-860-7319 cell
cberglee@montwyowest.com*

Phone: (406) 628-2341 (office) Website: montwyowest.com
P.O. Box 578, Laurel, Montana 59044



DESCRIPTION: The Harris Ranch nurtures a large herd of elk, deer, pheasants, and cattle in the rugged Missouri breaks, and lush irrigated hay fields along the river.



Missouri River Breaks



Huge 6 X 6 Bull

ACREAGE: The Harris Ranch has about 2,500 deeded acres with 330+/- acres flood irrigated from the river. There are 640 acres state of Montana lease, and about 7,250 acres of BLM. The deeded land has been plotted into about 115 tax deeds of about 20 acres each.



Another great Pope & Young Bull



Reservoir in the Breaks

HUNTING: The ranch is in Hunting District 700. The ranch owner is a licensed outfitter, and has outfitted for archery deer and trophy elk.

The ranch has been carefully managed for trophy elk, taking 10-15 Pope & Young bulls each year. A 402 bull and a 411 ½ bull have been taken.

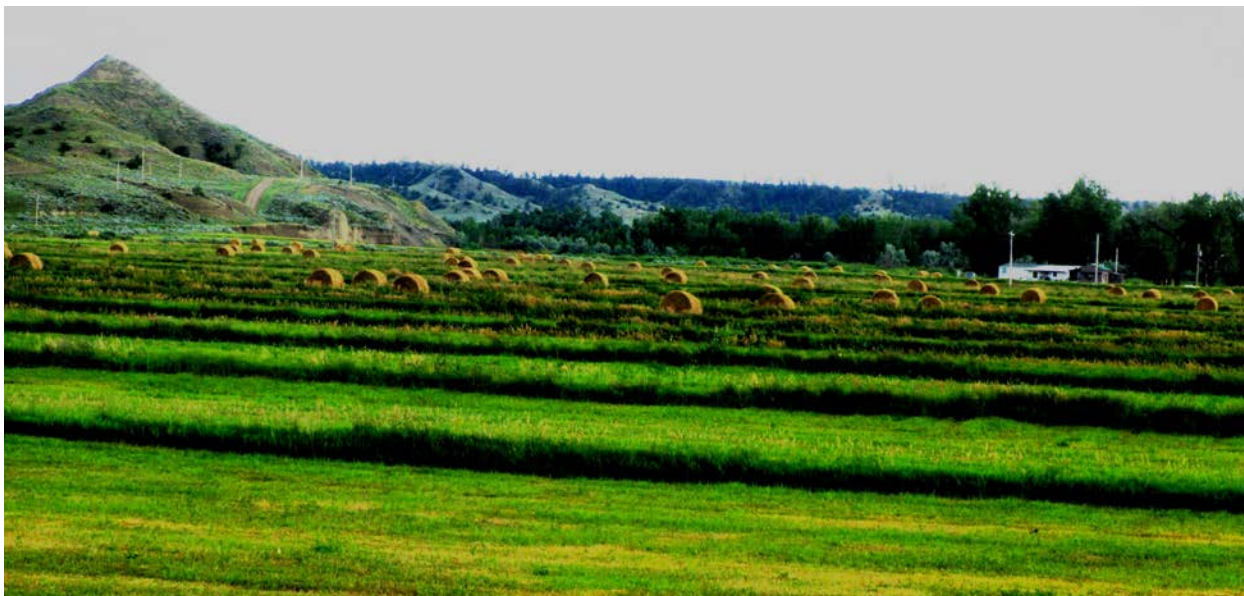
Elk drift off the public lands each fall to feast on the lush deeded hay meadows of the ranch. Elk are smart, and know they are safe on the ranch hay meadows. The rancher has allowed the elk to remain there without interference. Tree stands on the edge of the meadows are used to harvest the Pope & Young caliber bulls.





WATER: Harris Ranch pumps irrigation water directly from the river. Water Rights go back to 3,000 gpm in 1906.

The ranch produced over 800 ton of feed in 2013.





Sorghum along the River



River Erosion from Flooding

The ranch has done extensive dirt work remodeling the irrigated fields after the historic flooding in 2011.



Tank on Pipeline on Deeded Land

A well supplies the 8-10 tanks on the stock water pipeline that extends from the well on the northwest to the border on the south east corner of the ranch. The wells and tanks are all on deeded land. There is a large storage tank at the highest point on the pipeline.



Storage Tank



Water Tank

There are numerous reservoirs in the Missouri River breaks.

Wildlife and livestock share the water.





Ranch Mares with Foals

The seasoned rancher grew up in the rugged Montana range of the Old West. It was his wise animal husbandry and careful nurturing of the Harris Ranch that created one of the nation's largest harvests of Pope & Young bull elk year after year, gentle athletic horses, obedient stock dogs, and profitable range cattle.

Without baiting or fences, HUNDREDS of elk freely rut on the Harris Ranch. Although public land is very close, almost no bull elk have ever been killed on the neighboring public lands. Elk know where they feel safe and are not harassed.



Elk during the Rut



Ranch Corrals

IMPROVEMENTS: The Harris Ranch improvements are very functional. The corrals could handle 350-400 cows. Often elk watch nearby as the cowboys work the cattle.



Main Home w Man's best Friends

The 900 sq. ft. main home was built in 1948, but just received a new roof, windows, propane furnace, siding, and doors.

Many of the greatest archery elk videos were filmed on this ranch. The tree stands provide easier access for the hunters. The incredible concentration of activity provides front row seating to a great show.



Hunters' House

ELEVATION: 2,300-3,050 ft.

MINERALS: None

TAXES: \$4,000-\$4,200

PRICE & TERMS: \$5.5 million



Rooster along the River

There are NO easements on the ranch. Foundations are interested in a conservation easement, which could save a million dollars or more in taxes.

COMMENTS: Pope and Young scoring is for archery only. Boone and Crockett is for any bull, harvested by any legal weapon, scoring over 360 points. This ranch consistently produces many Pope & Young class bull elk annually. Boone & Crockett bulls are also taken.

The old cow ranch is the live version of the Charles M. Russell paintings. Russell lived and painted in this county, and rode these ranges.

The Harris Ranch runs about 200 cows and grows the winter feed for twice that many.

The Northern Yellowstone Park Elk Herd once numbered 19,000 elk. After the introduction of the Canadian timber wolf, there are less than 4,000 elk in this herd. Other areas of the Rocky Mountain West have experienced a similar decimation. Fortunately in the area of the Harris Ranch, wolves are not active, and the herd populations are stable.





Ranch Mule Deer



Ranch Whitetail Bucks

Disclaimer All information is from sources deemed reliable, but cannot be guaranteed as accurate. Prospective buyers are encouraged to research the information to their own satisfaction. Any offer is subject to errors, omissions, prior sale, change or withdrawal without notice, and approval of seller. Water rights are subject to the Montana Water Court.