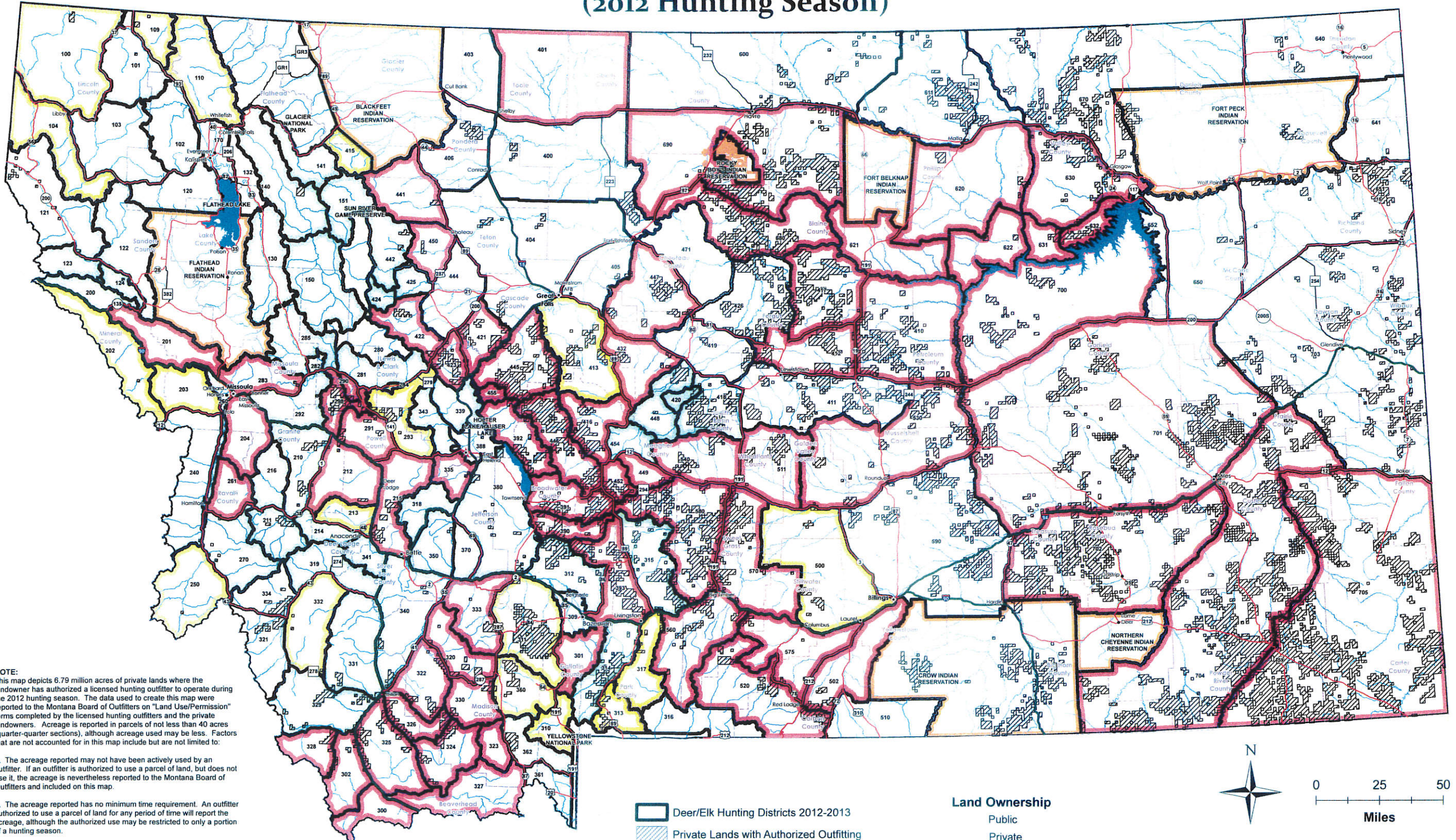


# Private Lands Where Landowners Authorize Licensed Hunting Outfitters to Operate and Elk Population Objective Status by Hunting Districts (2012 Hunting Season)



**NOTE:**  
This map depicts 6.79 million acres of private lands where the landowner has authorized a licensed hunting outfitter to operate during the 2012 hunting season. The data used to create this map were reported to the Montana Board of Outfitters on "Land Use/Permission" forms completed by the licensed hunting outfitters and the private landowners. Acreage is reported in parcels of not less than 40 acres (quarter-quarter sections), although acreage used may be less. Factors that are not accounted for in this map include but are not limited to:

1. The acreage reported may not have been actively used by an outfitter. If an outfitter is authorized to use a parcel of land, but does not use it, the acreage is nevertheless reported to the Montana Board of Outfitters and included on this map.
2. The acreage reported has no minimum time requirement. An outfitter authorized to use a parcel of land for any period of time will report the acreage, although the authorized use may be restricted to only a portion of a hunting season.
3. The acreage reported has no minimum with respect to the type of game the outfitter is authorized to pursue. An outfitter authorized to use a parcel of land to hunt any game animal will report the acreage, although the outfitter's use may be restricted to certain types of game within the outfitter's operation plan and as approved by the landowner.
4. Outfitter use of private land is not necessarily exclusive. An outfitter authorized to use a parcel of land will report the acreage, although the same parcel of land may be used by other members of the public to pursue the same or other types of game animals during the same period of time.

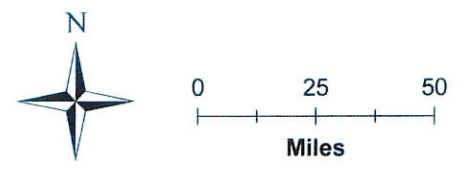
The production of this map is a cooperative effort between the Montana Board of Outfitters and the Department of Fish, Wildlife, and Parks. Electronic copies of this map may be obtained by contacting the

Deer/Elk Hunting Districts 2012-2013  
 Private Lands with Authorized Outfitting

**2012 Elk Objective Status**

Below Objective  
 At Objective  
 Over Objective

**Land Ownership**  
 Public  
 Private



Map produced by  
 Montana Fish, Wildlife & Parks  
 Data Services Section  
 1420 East 6th Ave  
 Helena, MT 59620

Public land ownership, counties, roads, cities from the Natural Resource Information System, Montana State Library, Helena, MT.  
 Hunting districts, elk population objective status and hydrography from Montana Fish.