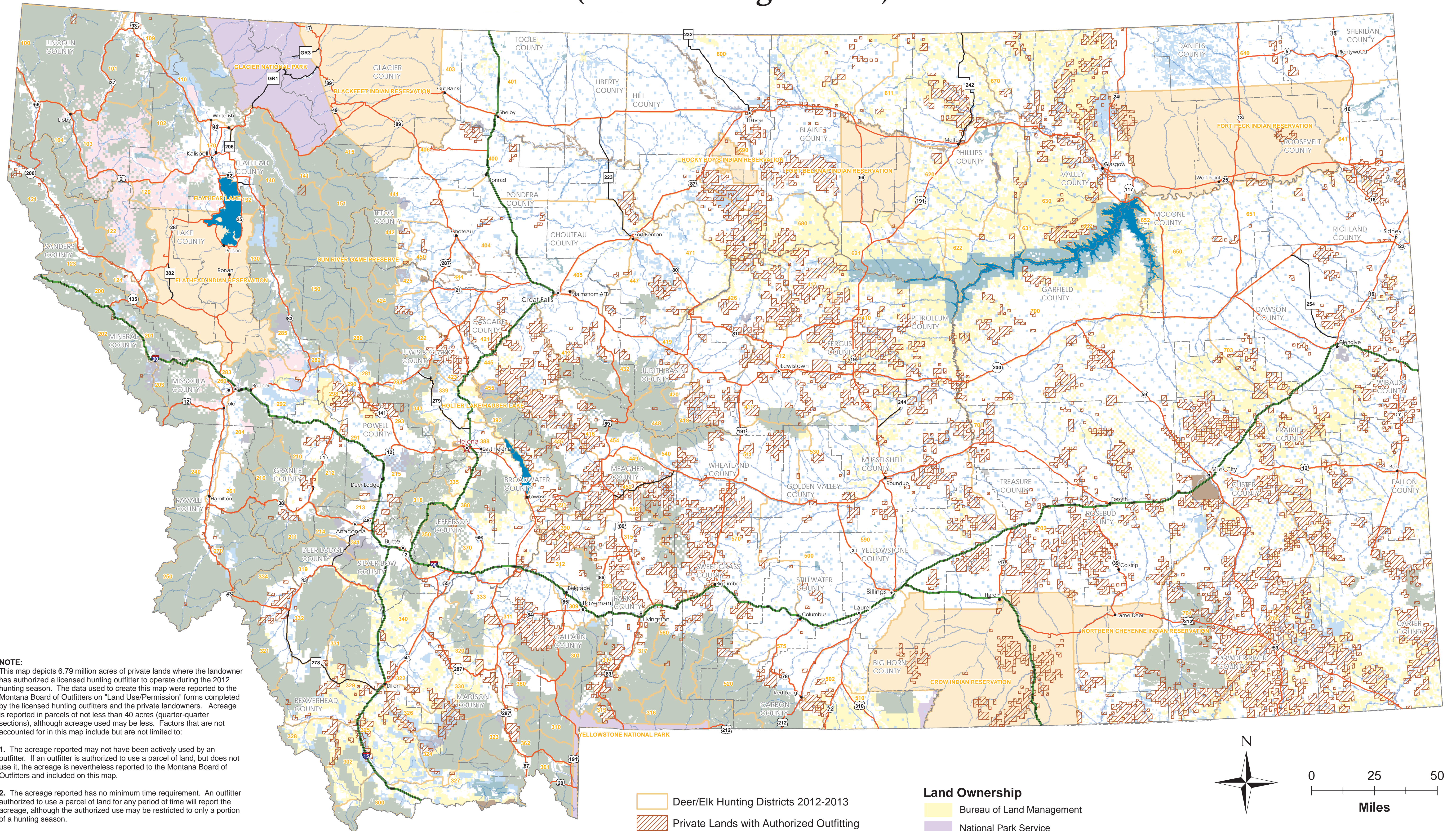


# Private Lands Where Landowners Authorize Licensed Hunting Outfitters to Operate (2012 Hunting Season)



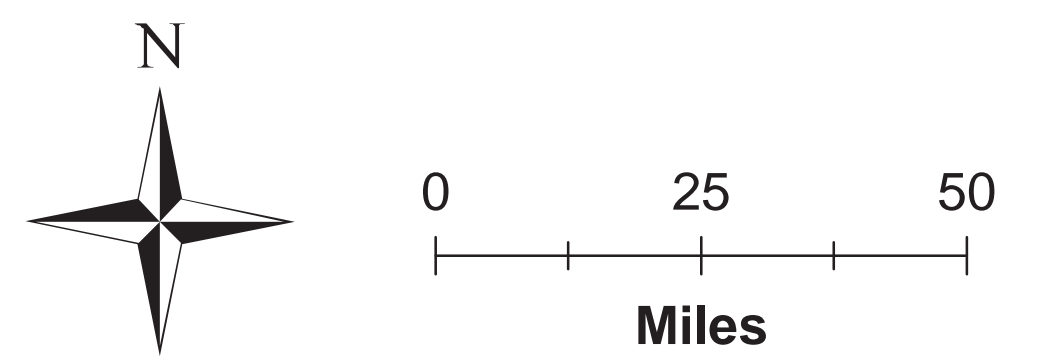
**NOTE:**  
This map depicts 6.79 million acres of private lands where the landowner has authorized a licensed hunting outfitter to operate during the 2012 hunting season. The data used to create this map were reported to the Montana Board of Outfitters on "Land Use/Permission" forms completed by the licensed hunting outfitters and the private landowners. Acreage is reported in parcels of not less than 40 acres (quarter-quarter sections), although acreage used may be less. Factors that are not accounted for in this map include but are not limited to:

1. The acreage reported may not have been actively used by an outfitter. If an outfitter is authorized to use a parcel of land, but does not use it, the acreage is nevertheless reported to the Montana Board of Outfitters and included on this map.
2. The acreage reported has no minimum time requirement. An outfitter authorized to use a parcel of land for any period of time will report the acreage, although the authorized use may be restricted to only a portion of a hunting season.
3. The acreage reported has no minimum with respect to the type of game the outfitter is authorized to pursue. An outfitter authorized to use a parcel of land to hunt any game animal will report the acreage, although the outfitter's use may be restricted to certain types of game within the outfitter's operation plan and as approved by the landowner.
4. Outfitter use of private land is not necessarily exclusive. An outfitter authorized to use a parcel of land will report the acreage, although the same parcel of land may be used by other members of the public to pursue the same or other types of game animals during the same period of time.

The production of this map is a cooperative effort between the Montana Board of Outfitters and the Department of Fish, Wildlife, and Parks. Electronic copies of this map may be obtained by contacting the Montana Board of Outfitters in Helena.

- Deer/Elk Hunting Districts 2012-2013
- Private Lands with Authorized Outfitting

- Land Ownership**
- Bureau of Land Management
  - National Park Service
  - US Fish and Wildlife Service
  - US Forest Service
  - MT Fish, Wildlife & Parks
  - State Trust Lands
  - Indian Reservations
  - Plum Creek Timber Company
  - Private; Other



Map produced by:  
Montana Fish, Wildlife & Parks  
Data Services Section  
1420 East 6th Ave  
Helena, MT 59620

Public land ownership, counties, roads, cities from the Natural Resource Information System, Montana State Library, Helena, MT.  
Hunting districts and hydrography from Montana Fish, Wildlife & Parks, Helena, MT.  
W:\Annual\_Projects\Outfitters\2011\outfitterLand2011.mxd - September 3, 2013 - BC