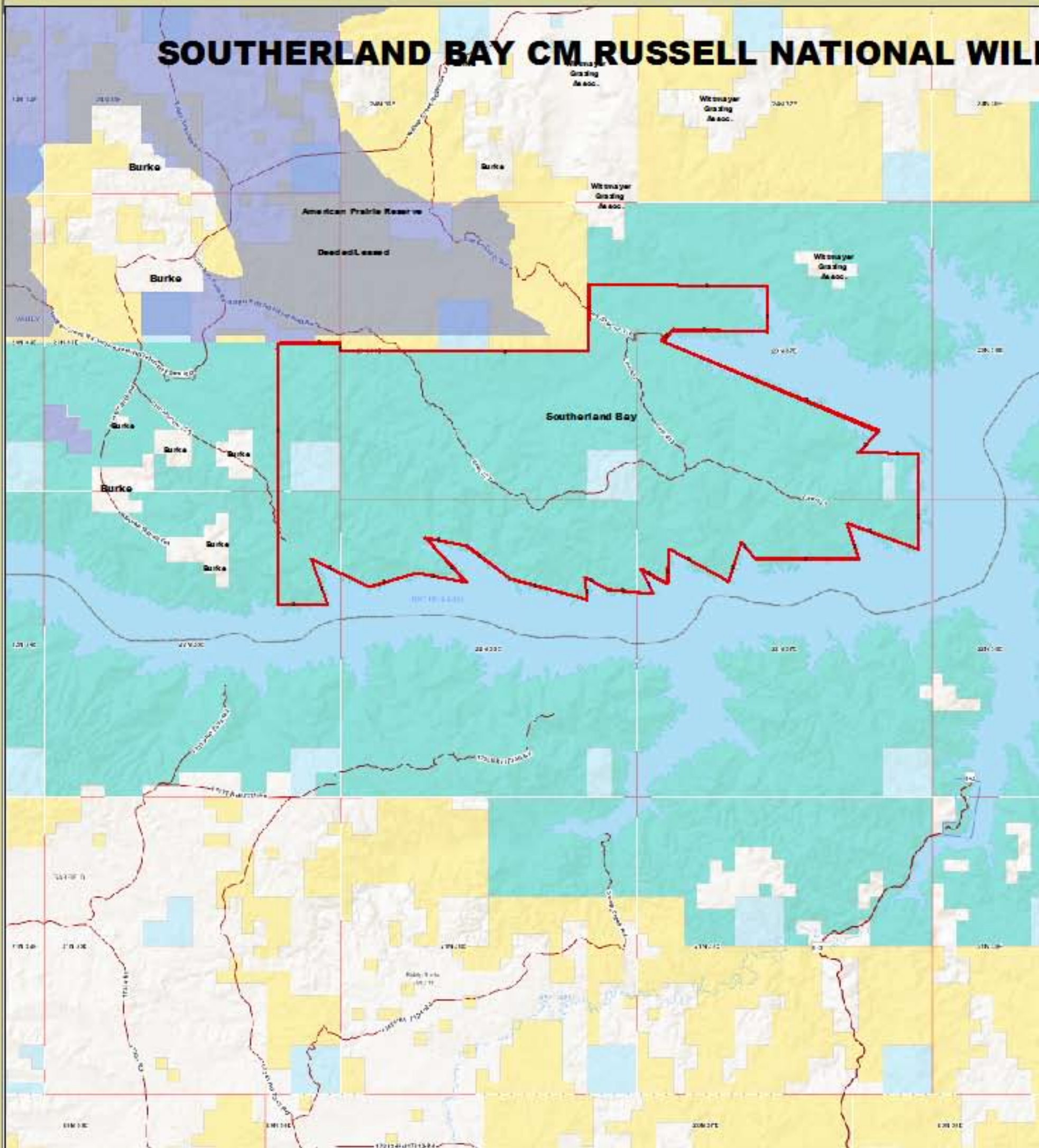


SOUTHERLAND BAY CM RUSSELL NATIONAL WILDLIFE REFUGE



SOUTHERLAND BAY CM RUSSELL NATIONAL WILDLIFE REFUGE

32,870 Acres in Southerland Bay Area
 Township 22N - Range 35 East 560 Acres
 Township 22N - Range 36 East 5,660 Acres
 Township 22N - Range 37 East 3,890 Acres
 Township 23N - Range 35 East 1,920 Acres
 Township 23N - Range 36 East 12,280 Acres
 Township 23N - Range 37 East 8,560 Acres

In this area, BLM uses as a formula, 24 acres per cow to maintain healthy rangeland. Using this same formula for bison, up to 1200 bison could occupy the area providing quality habitat.

-  American Prairie Reserve Deeded/Leased
-  Southerland Bay Area
-  Private Ownership
-  Bureau of Land Management
-  State of Montana Ownership



0 0.5 1 2 Miles
